



∴ **HEINE BETA® LED F.O. Otoscopes**

The best and brightest HEINE Otoscopes based on 70 years of experience and exclusive LED^{HQ} Technology



[HEINE BETA[®] 400 LED F.O. OTOSCOPE]

BETA 4 rechargeable handles with latest Li-ion technology offer more than double the capacity (no memory effect) compared to previous NiMH rechargeable batteries, rapid charging* and an additional charge status indicator**

*BETA 4 NT (Li-ion) typically 2 hrs.
BETA 4 USB (Li-ion) typically 4 hrs.

**only for BETA 4 NT, BETA 4 USB

Insufflation port for pneumatic mobility testing

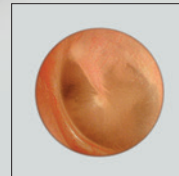


Metal housing

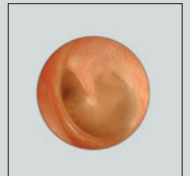


Continuous brightness control
typ. 77,000 lux with tip (5mm),
LED^{HQ} for homogeneous and
colour accurate illumination

Exclusive 4.2x magnification



BETA 400 LED F.O. Otoscope



Conventional Otoscope

HEINE BETA[®] LED F.O. Otoscopes: Sharpest images, perfect colour rendering and brightness

Exclusive 4.2x or 3x magnification. More detail of anatomical structures and easy recognition of foreign bodies.

Fibre Optic Illumination. **Ensures homogeneous, very bright illumination and an unobstructed view of the ear canal and tympanum.**

Exclusive continuous brightness control between 100% and 3% (patent pending). **Optimal light intensity can be individually adjusted for every examination situation.**

The permanently attached optical system which can be flipped open/swivelled out of the way enables **instrumentation and easy cleaning of the instrument head.**

With an all metal housing and a scratch resistant glass window, BETA LED F.O. Otoscopes **guarantee a lifetime of maintenance-free use** and high-quality patient assessments.

5 Year Guarantee. HEINE makes no compromises in manufacturing high quality medical instruments. Our commitment to vertical integration in manufacturing means we control all aspects of our instrument quality.



HEINE LED^{HQ}: Light that shows colours as they are



LED light sources impress with their long lifetime and energy efficiency. There is no need to ever exchange the LED. The quality of LED illumination can however vary greatly compared to XHL illumination.

With the exclusive HEINE LED^{HQ} technology you can enjoy all benefits of LED technology, with no compromise in illumination quality. This is achieved by a high Colour Rendering Index (CRI) of 97 (red is red, blue is blue).

BRIGHT AND HOMOGENEOUS ILLUMINATION
with typ. 77,000 lux (with 5 mm tip).

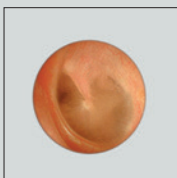
HIGH COLOUR RENDERING INDEX
Colour temperature: typ. 3,500K, Colour Rendering Index (CRI) > typically 97, special index for red colours (R9) > 93.

CONSISTENT LIGHT OUTPUT AND PERFORMANCE
throughout the whole working life of typ. 100,000 hours.

EFFICIENCY
with the BETA4 rechargeable handle a longer examination time of approx. 3x.

[HEINE BETA[®] 200 LED F.O. OTOSCOPE]

Swivelling viewing window with 3x magnification



Metal housing



Insufflation port for pneumatic mobility testing

Continuous brightness control typ. 77,000 lux with tip (5 mm), LED^{HQ} for homogeneous light with true colours



BETA4 rechargeable handles with latest Li-ion technology offer more than double the capacity (no memory effect) compared to previous NiMH rechargeable batteries, rapid charging* and an additional charge status indicator**

*BETA4 NT (Li-ion) typically 2 hrs
BETA4 USB (Li-ion) typically 4 hrs

**only for BETA4 NT, BETA4 USB

[ORDERING INFORMATION]

BETA400 LED F.O. Otoscope Set with BETA4 USB rechargeable handle

The set includes the BETA400 LED F.O. Otoscope; 1 set (4 pcs.) reusable tips and 5 of both 2.5 and 4 mm Ø AllSpec disposable tips, **BETA4 USB rechargeable handle with USB cord and plug-in power supply**, hard case, handle rest

B-143.28.388



BETA400 LED F.O. Otoscope Set with BETA4 NT rechargeable handle

The set includes the BETA400 LED F.O. Otoscope; 1 set (4 pcs.) reusable tips and 5 of both 2.5 and 4 mm Ø AllSpec disposable tips, **BETA4 NT rechargeable handle with NT 4 table charger**, hard case

B-143.24.420

BETA400 LED F.O. Otoscope with 4 reusable tips, without handle

B-008.11.401

BETA200 LED F.O. Otoscope Set with BETA4 USB rechargeable handle

The set includes the BETA200 LED F.O. Otoscope; 1 set (4 pcs.) reusable tips and 5 of both 2.5 and 4 mm Ø AllSpec disposable tips, **BETA4 USB rechargeable handle with USB cord and plug-in power supply**, hard case, handle rest

B-141.28.388



BETA200 LED F.O. Otoscope Set with BETA4 NT rechargeable handle

The set includes the BETA200 LED F.O. Otoscope; 1 set (4 pcs.) reusable tips and 5 of both 2.5 and 4 mm Ø AllSpec disposable tips, **BETA4 NT rechargeable handle with NT 4 table charger**, hard case

B-141.24.420

BETA200 LED F.O. Otoscope with 4 reusable tips, without handle

B-008.11.501




For additional product configurations and further HEINE Quality Products please visit www.heine.com or give us a call!

We reserve the right to change specification without notice.
© 2017 HEINE Optotechnik GmbH & Co. KG. All rights reserved.

Your distributor

07/17. A-000.00.266 e



 **HEINE Optotechnik GmbH & Co. KG**, Kientalstr. 7, 82211 Herrsching, Germany
Tel. +49 (0) 8152/38-0, Fax +49 (0) 8152/38-202, E-Mail: info@heine.com, www.heine.com

