

# Quick reference card •

For BVS series  
Bladder Volume Scanners



## Turn on the BVS by pressing the power button •

Press the powerbutton 4 seconds.  
If the device is in sleepmode press also the button. The instrument turns on.



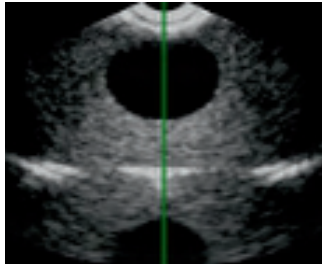
## Patient •

Have the patient lie in the supine with abdominal muscles relaxed.



## Use sufficient amount of gel •

Place an ample amount of gel on the probe head or on the midline of the patients abdomen approximately 1 inch (2-3 CM) above the symphysis pubis ( pubic bone). Place the instrument on the patient's abdomen, and aim the instrument slightly ( $15^{\circ}$  ~  $30^{\circ}$ ) downward the patient's coccyx (tail bone).



**Press and release the scan button •**

Locate the bladder with the Pre-Scan Function.

- Aim the probe head towards the bladder
- Provide some pressure (probe – skin) to ensure contact
- The green line must be in the middle of the result screen
- Hold the probe steady until the scan is finished

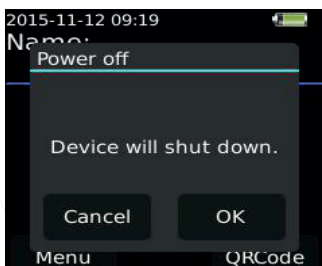
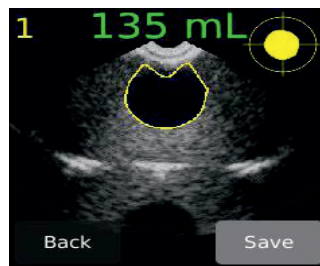


**Press the scan button again to start the actual scanning function •**

Hold the probe head steady for 4 seconds while scanning. If the scan is successful, the bladder appears in the center of the crosshairs on the console.

**Evaluate the scan results and save the scan •**

- Browse the images by sliding on the images
- Store image by clicking the save button
- 3 measurements per patient can be stored



**Shut down the instrument •**

- Press the power button for 2 seconds and press OK.
- Automatically sleepmode after 5 minutes
- Automatically shut down after 8 minutes